

# Parallel tussen personalized medicine en precisielandbouw

Ctgb Relatiedag  
Ede, 15 June 2017

**ctgb**

College voor toelating van  
gewasbeschermingsmiddelen en  
biociden

— Prof Alain van Gool —

**Radboudumc**  
university medical center

**TNO** innovation  
for life

**DTL** 

**eatris**

European infrastructure  
for translational medicine



Biomarker  
Development  
Center

 **health**  
**RI** research  
infrastructure

# Alain's path 1989-now



Universiteit  
Leiden



Imperial Cancer  
Research Fund



Schering-Plough

Radboud Universiteit Nijmegen



MERCK

Be well

## Radboudumc



DTL



eatris

European infrastructure  
for translational medicine

- Basis in molecular biology
- Academia, pharma, medical center, applied research institutes
- Biomarkers / Omics / technologies
- Mechanisms of disease
- Translational medicine
- Personalized healthcare

Professor of Personalized Healthcare

Head Radboud Center for Proteomics, Glycomics & Metabolomics

Coordinator Radboud Technology Centers

Senior Scientist Integrator Biomarkers

Scientific lead DTL-Technologies

Head EATRIS Biomarker Platform

# Alain's path 1989-now



Universiteit  
Leiden

Erasmus MC  
Universitair Medisch Centrum Rotterdam



Imperial Cancer  
Research Fund



Schering-Plough

Radboud Universiteit Nijmegen



MERCK

Be well

## Radboudumc

**TNO** innovation  
for life

DTL

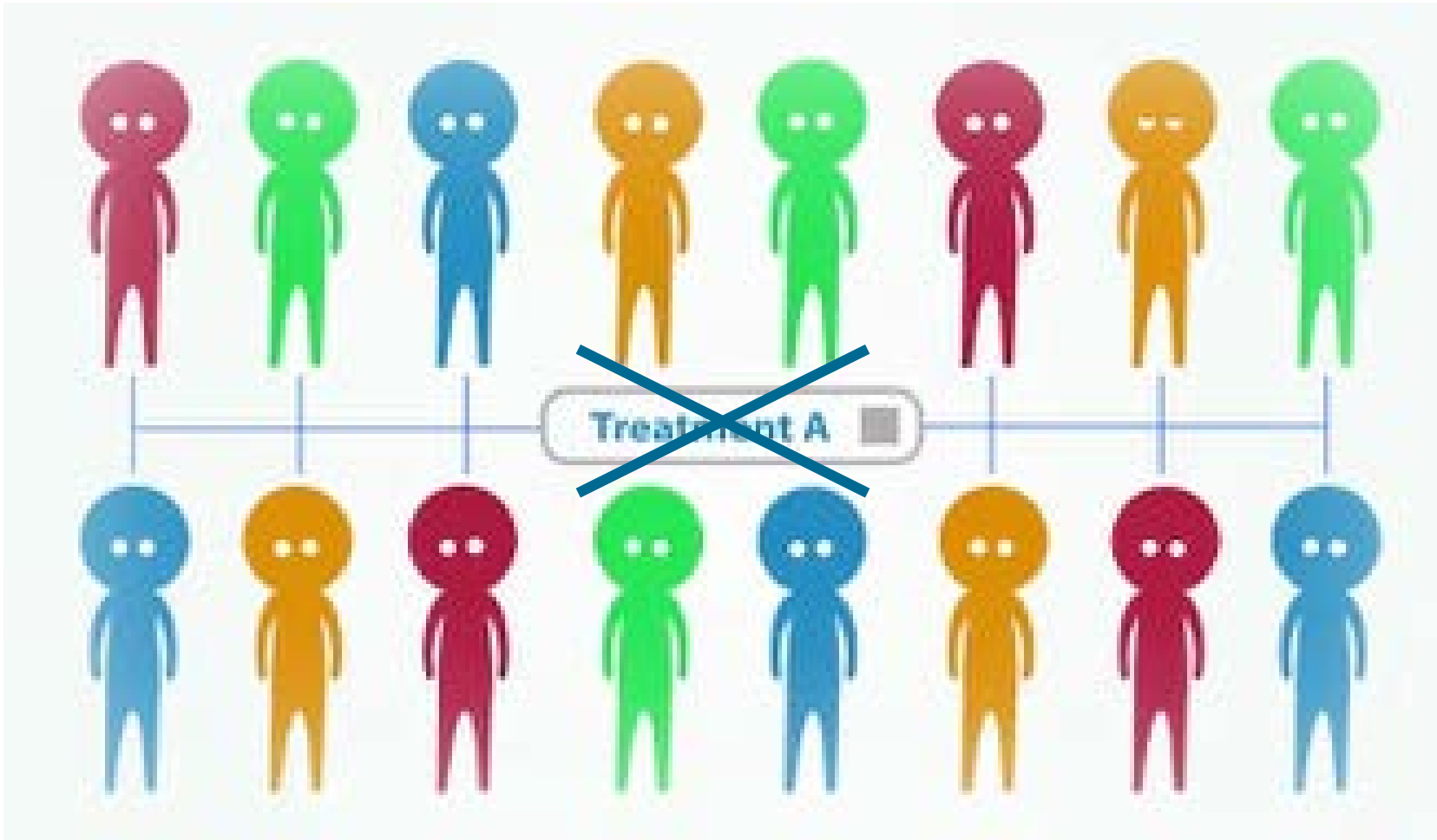


**eatris**

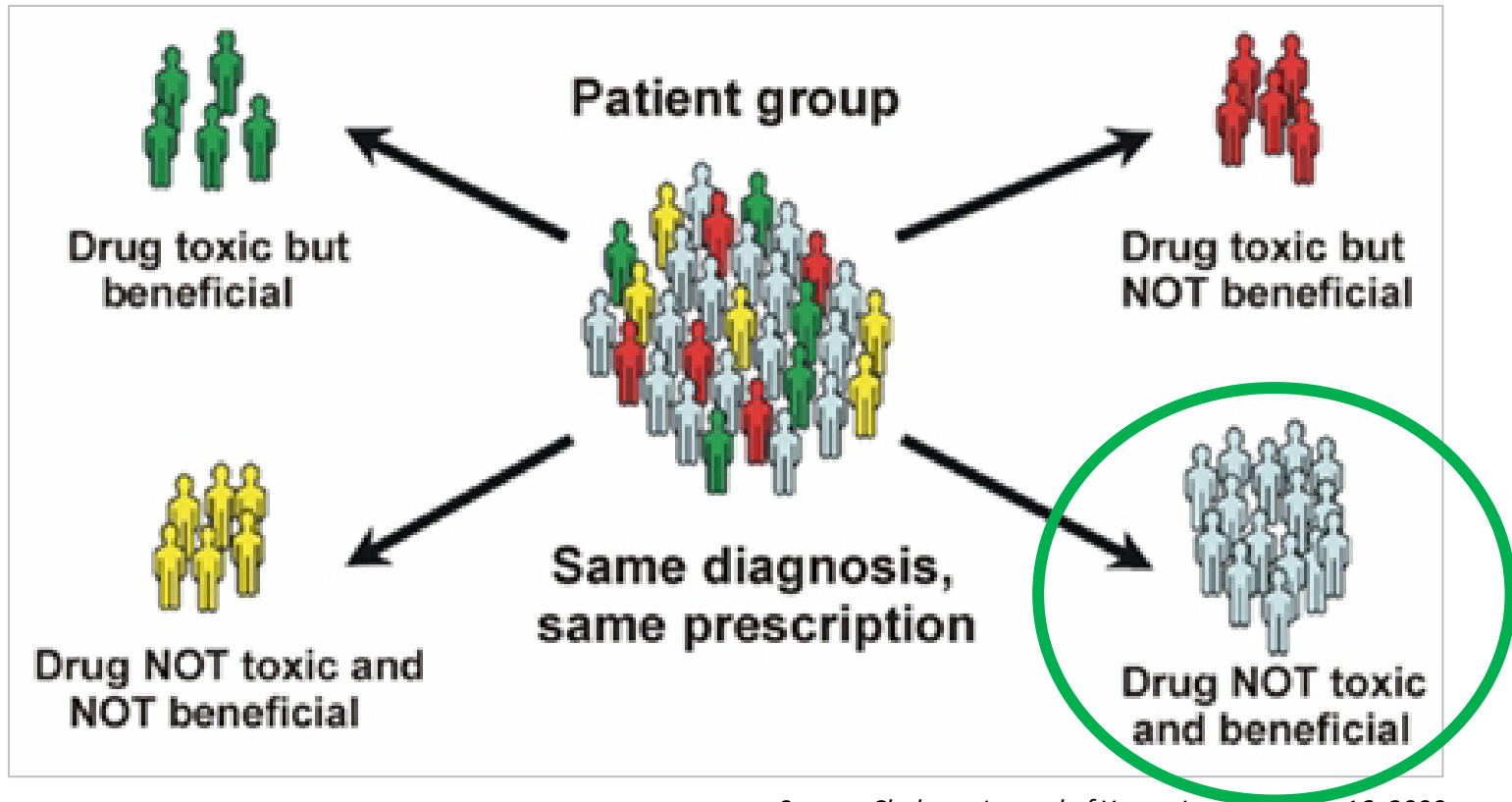
European infrastructure  
for translational medicine



# Consider individual differences in life science research



# Principle of Personalized Medicine



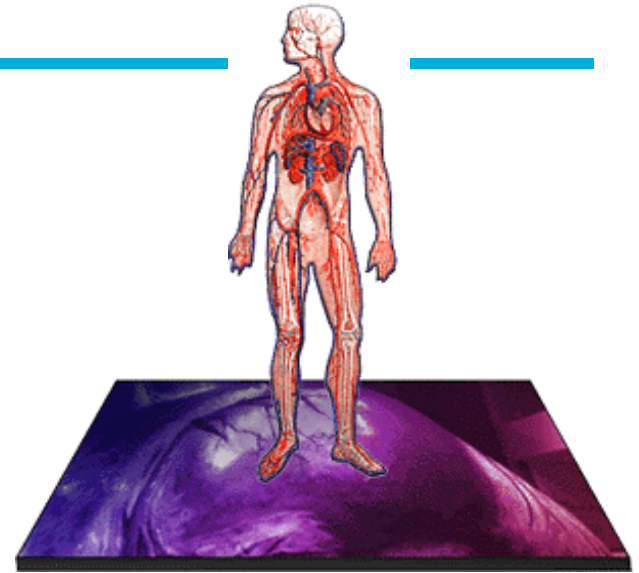
Source: Chakma, *Journal of Young Investigators*, 16, 2009

- The **right drug** for **right patient** at **right dose** at **right time**
- = Precision medicine or Targeted medicine

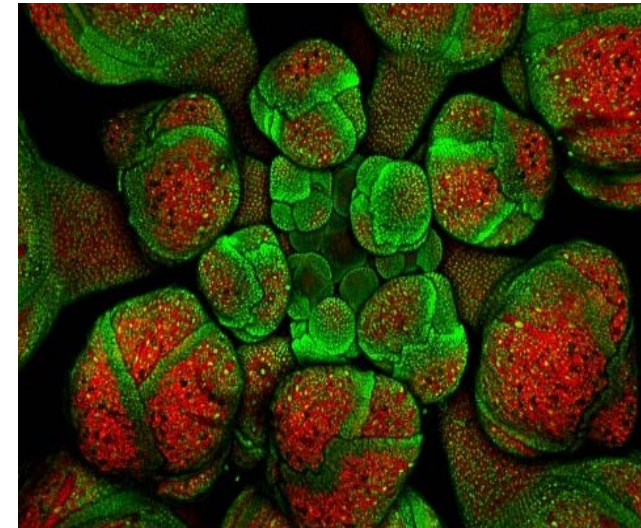
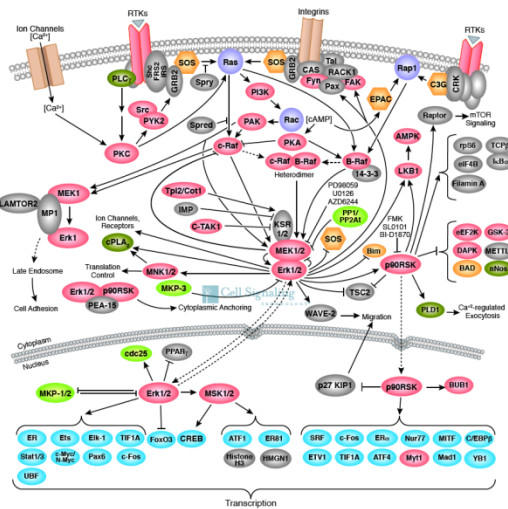
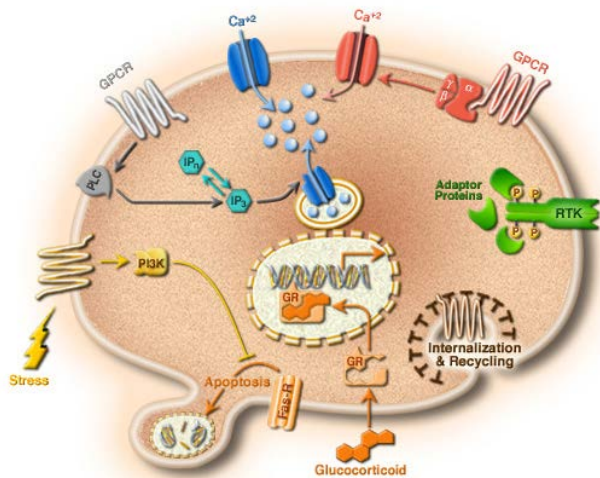




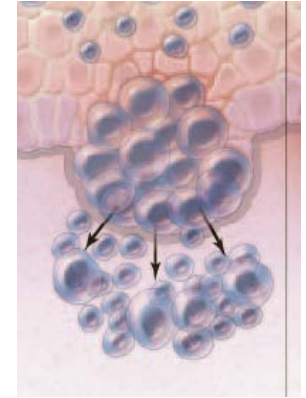
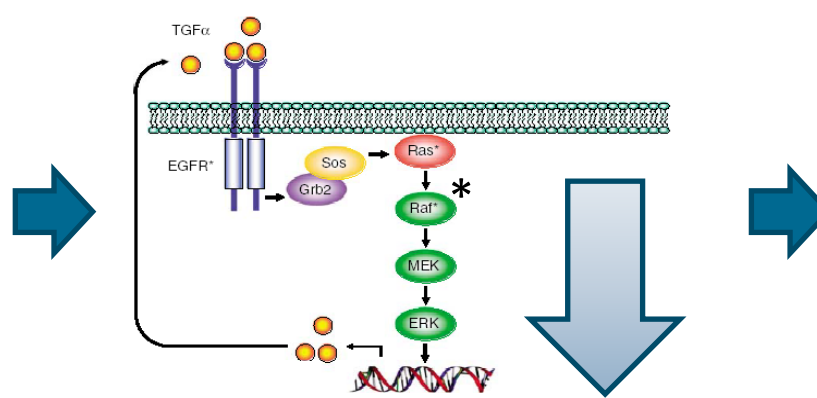
# Crash course in molecular biology



*DNA, protein, cell, tissue, system biology*



# Personalized medicine in melanoma



B-RAF<sup>V600E</sup> mutation

Strong growth of cell

Growth of tumor

- B-RAF<sup>V600E</sup> cells always grow and become cancer cells
- RAF inhibitors will block pathway, block cell growth and inhibit cancers that have a B-RAF<sup>V600E</sup> mutation
- 60% of melanoma patients have B-RAF<sup>V600E</sup> mutation
- Basis for a personalized medicine !



# Personalized medicine in melanoma

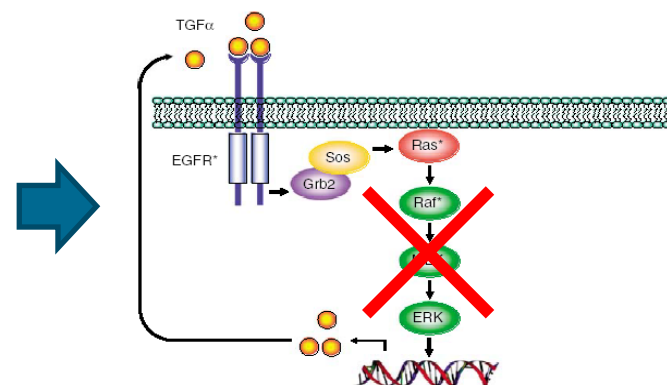
**ZELBORAF**  
(vemurafenib) tablets



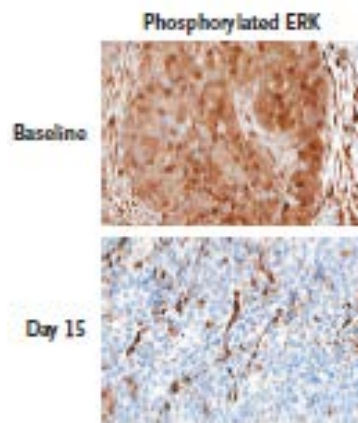
B-RAF inhibitor



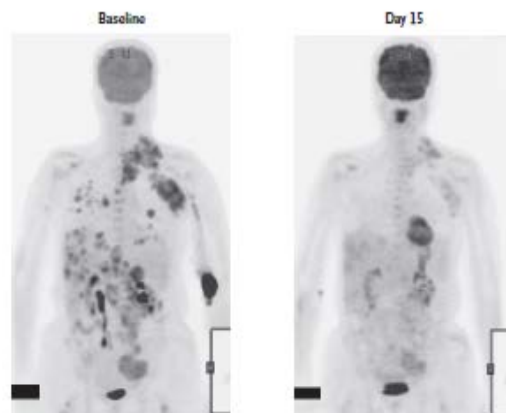
Treat patients with  
B-RAF<sup>V600E</sup> mutation



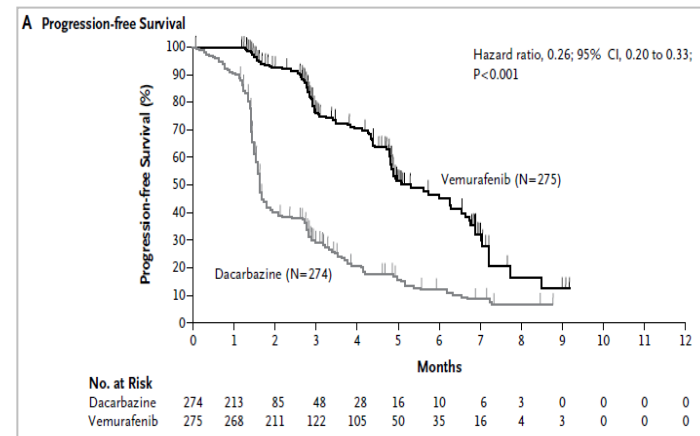
Inhibit growth of cell



Cells stop growing



Tumors disappear



Patients live longer



---

# Emerging Personalized / Precision / Targeted Medicine

2010:

**5%** of drugs in pipeline had companion diagnostic biomarker test

2015:

AstraZeneca  80%

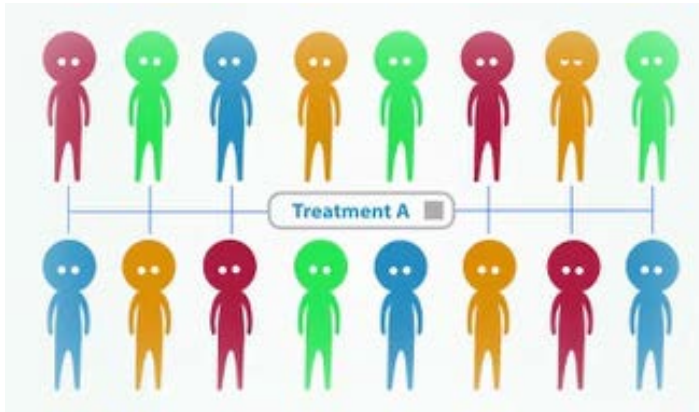
 50%

# Optimal Personalized / Precision / Targeted Medicine

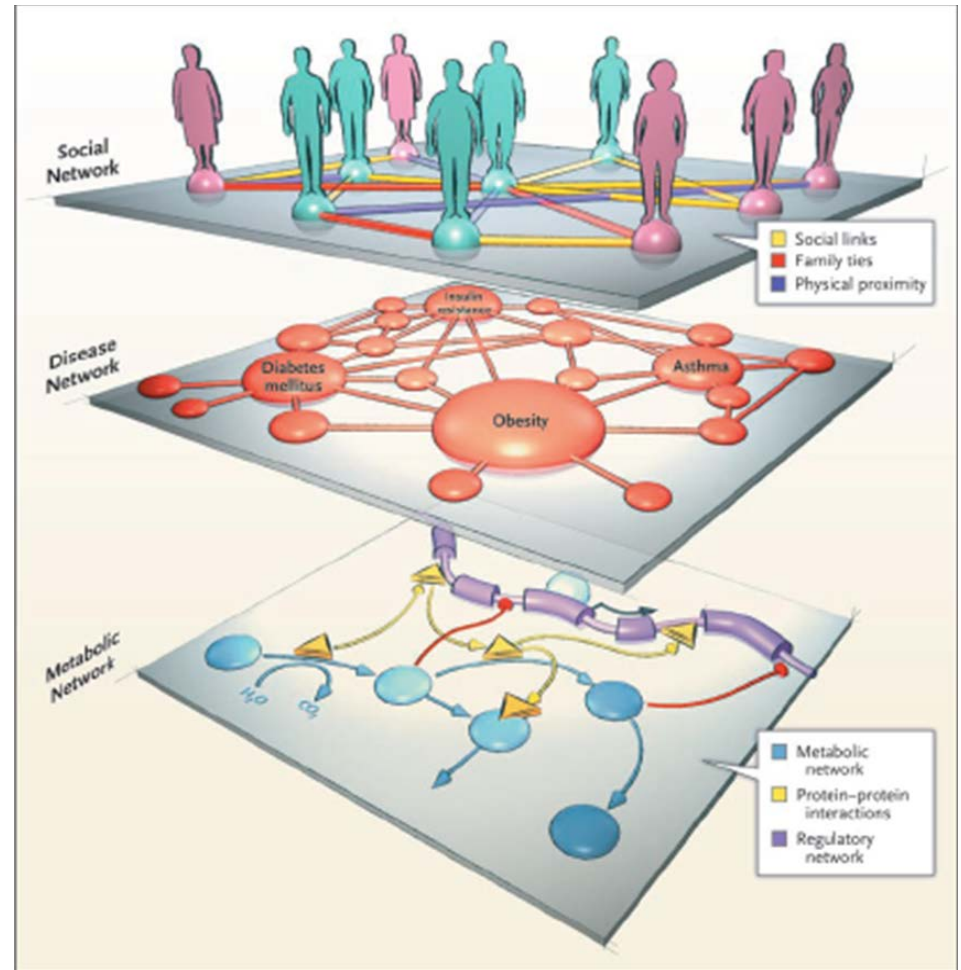
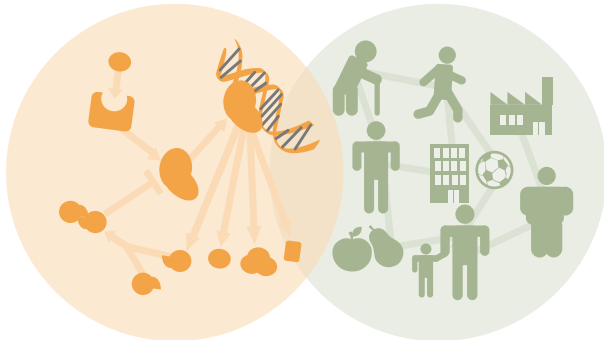


People are more than linear pathways

# Moving to personalized health(care)



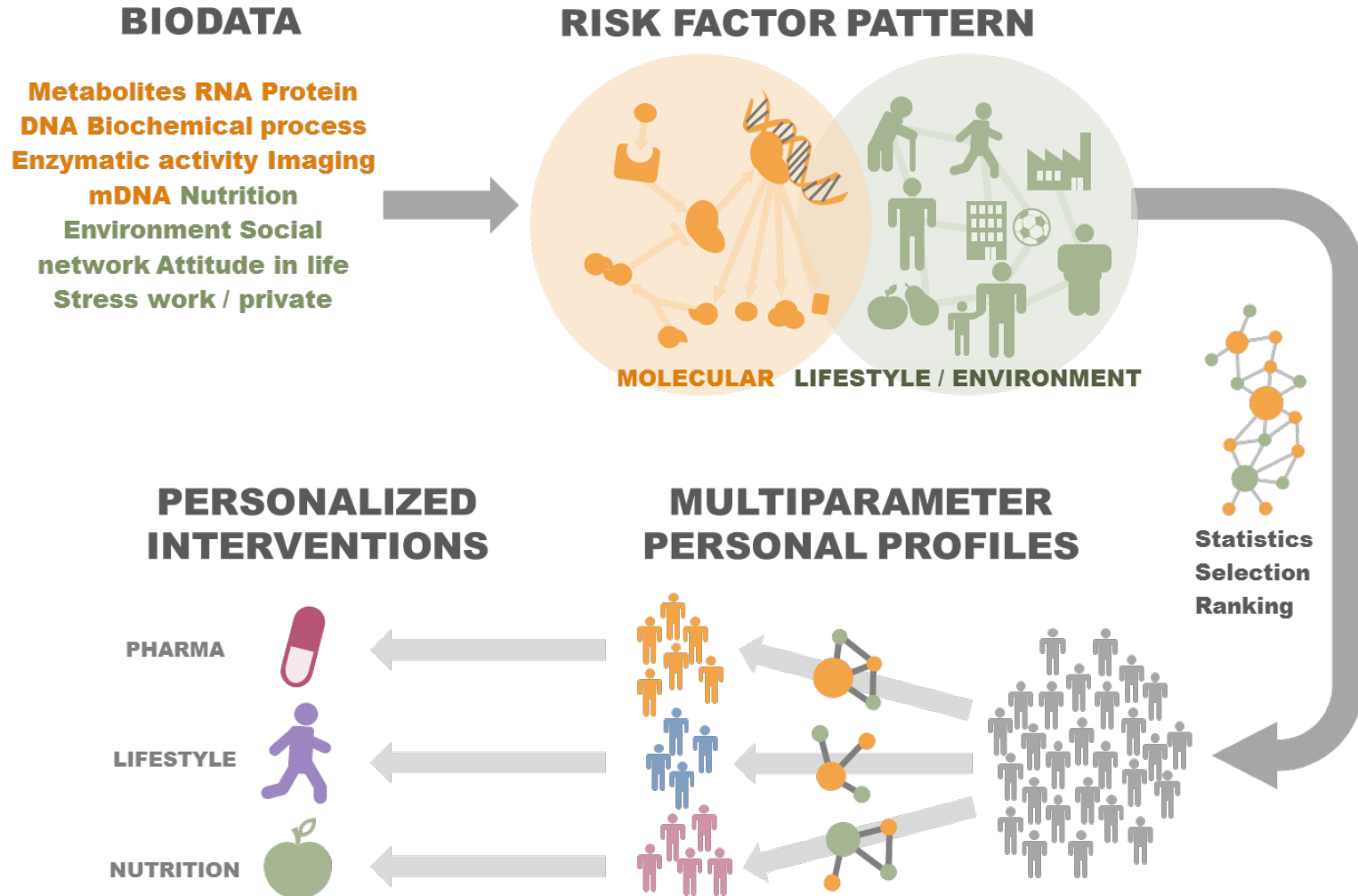
- People are more than linear pathways
- Different systems and networks
- Different risk factors
- Different preferences



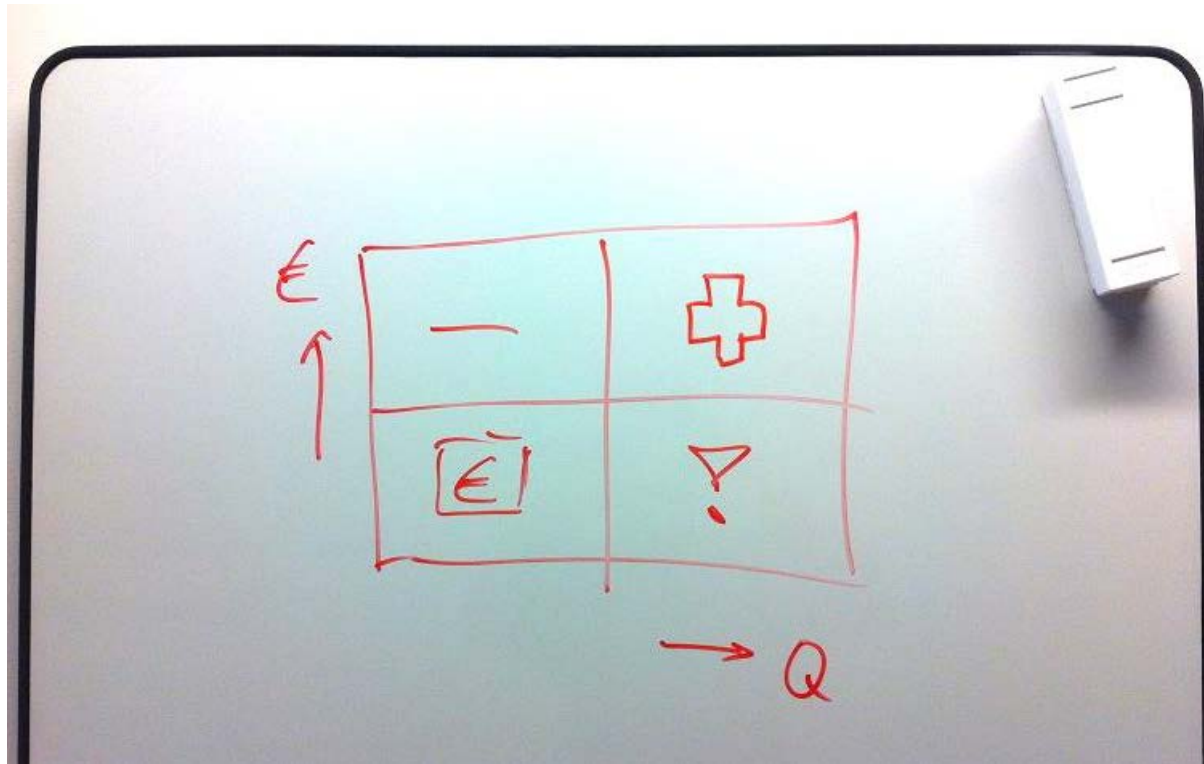
{Source: Barabási 2007 NEJM 357; 4}



# Personalized health(care) in a systems view



# Societal need in efficient personalized health(care)



{Source: prof Jan Kremer}

Towards cost effective care, less cure

---

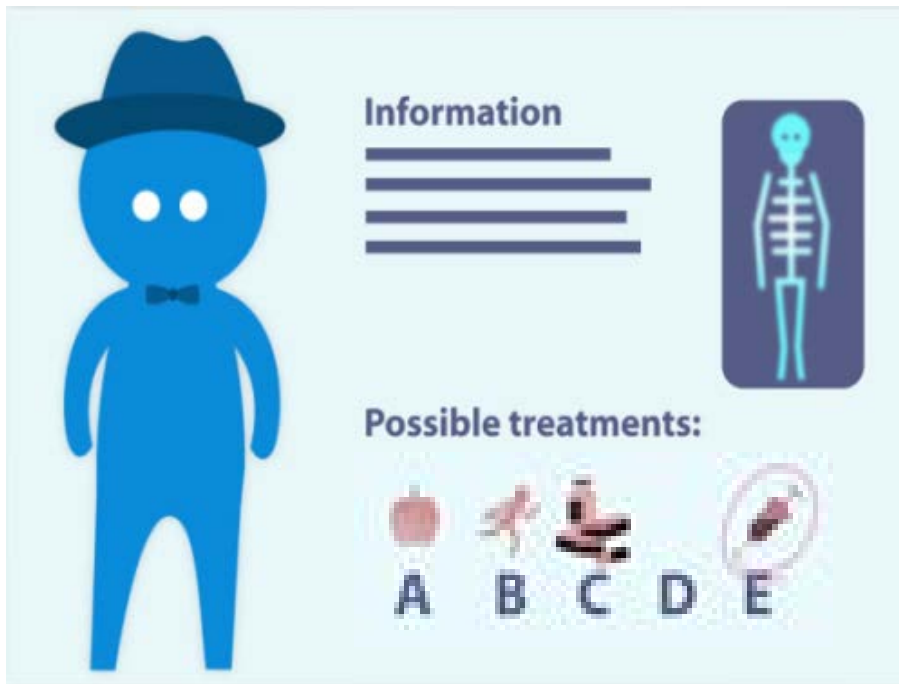
## Highest need in efficient personalized health(care)

It's personal !

'I want to stay healthy.'

'If not, how do I get healthy?'

# Focus on the end user: the patient / citizen



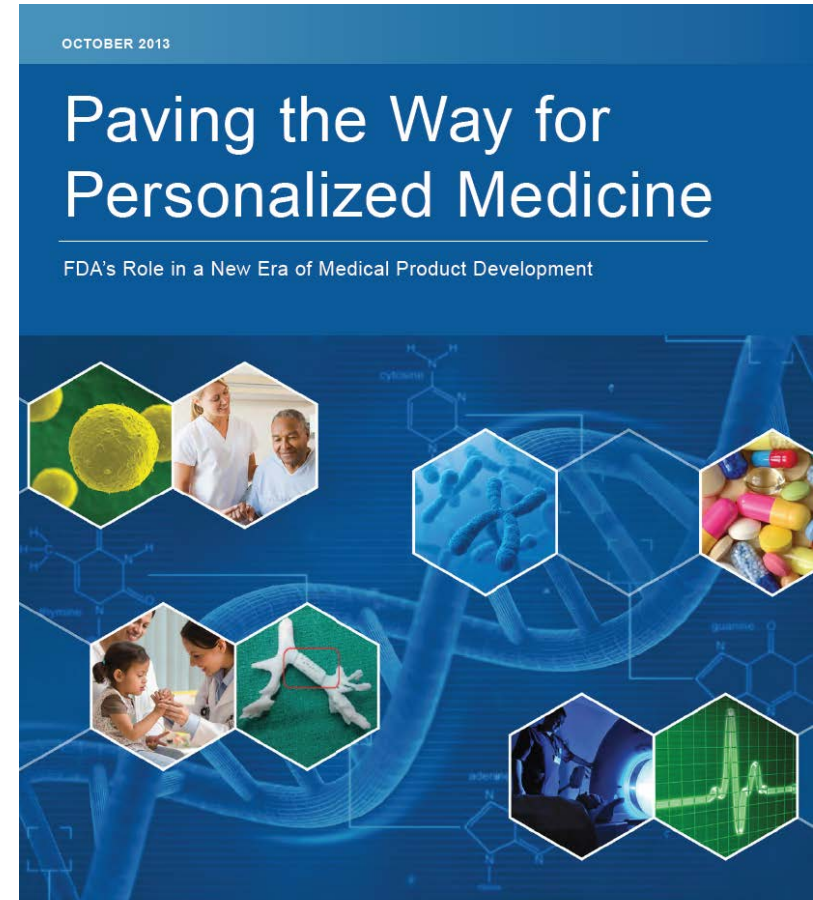


# Moving to Personalized Health(care)

*"The term "personalized medicine" is often described as providing "the right patient with the right drug at the right dose at the right time."*

*More broadly, "personalized medicine" may be thought of as the tailoring of medical treatment to the individual characteristics, needs, and preferences of a patient during all stages of care, including prevention, diagnosis, treatment, and follow-up."*

(FDA, October 2013)



U.S. DEPARTMENT OF HEALTH AND HUMAN SERVICES  
U.S. FOOD AND DRUG ADMINISTRATION

---

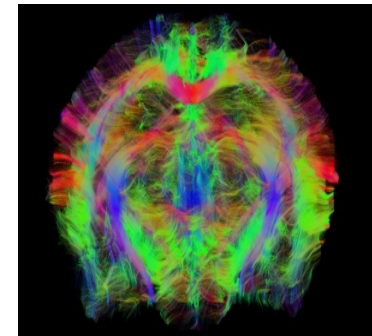
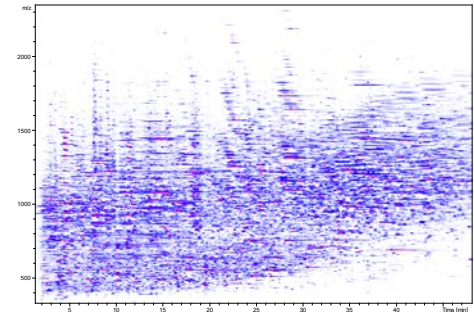
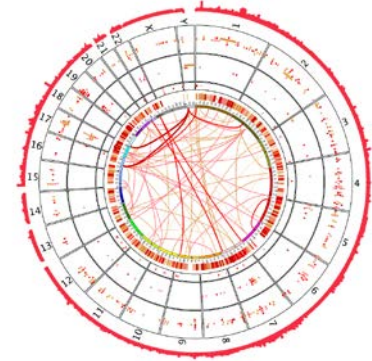
## 3 key aspects of personalized health(care)

'I want to stay healthy. If not, how do I get healthy?'

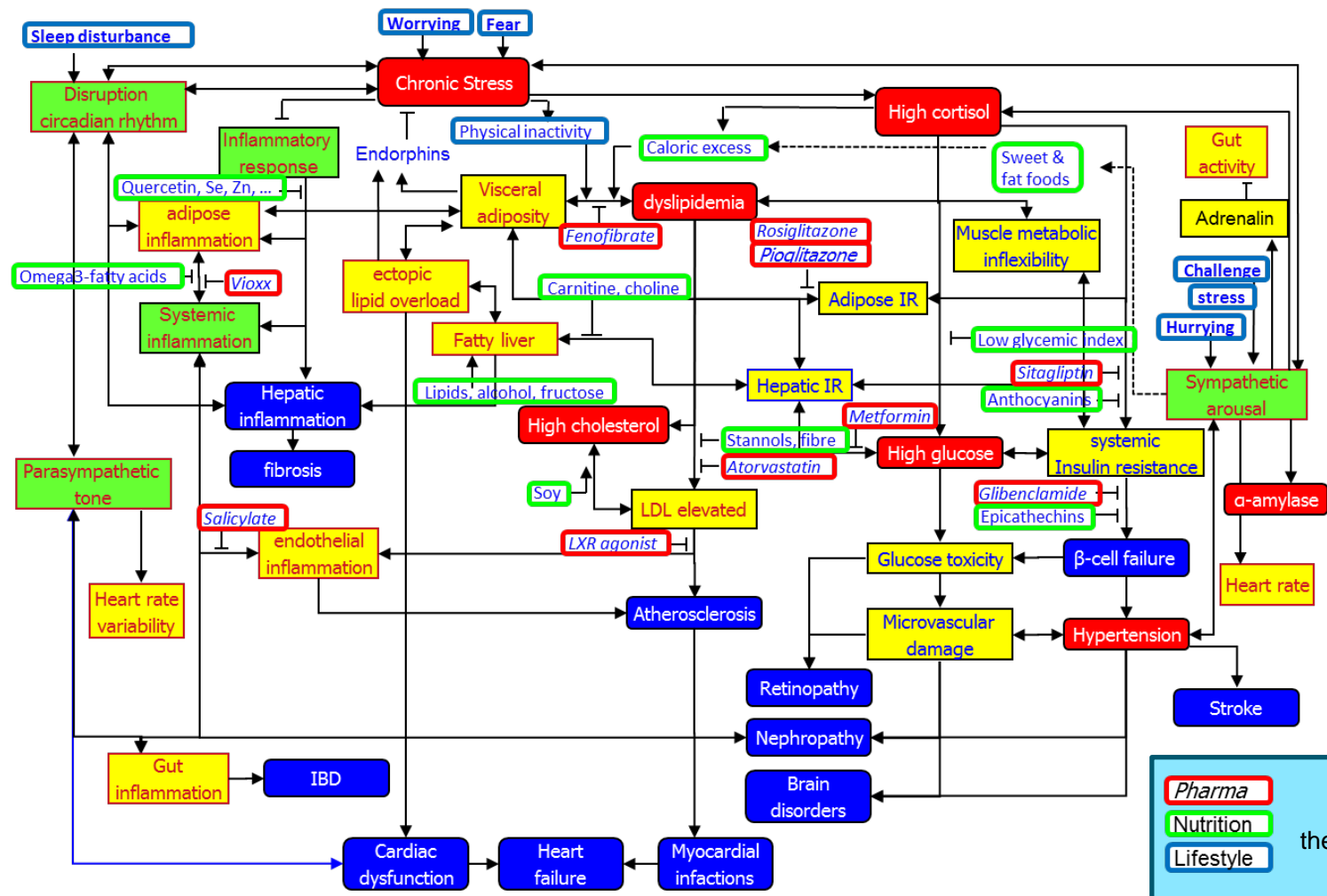
1. What to measure?
2. How much can it change?
3. What should be the follow-up for me?

# Exponential technology developments in laboratories

- Next generation sequencing
  - DNA, RNA
  - Risk analysis and therapy selection
- Mass spectrometry
  - Proteins, metabolites
  - Monitoring of disease and treatment effects
- Imaging
  - Non invasive images, real time
  - Spatial view of intact organs and organisms



# System biology





# A changing world: Getting digital





# New data !

(generators, owners)









News

## Phone app that can detect heart attack a week out considered by NHS



The smartphone app tracks changes in tone of voice to warn of heart attacks CREDIT: ALAMY



By Henry Bodkin

9 JUNE 2016 • 12:20AM

A smartphone app that can tell if users are in danger of having a heart attack by the tone of their voice is being considered for use by the NHS.

Clinical trials of the software showed it accurately predicted admission to hospital for people with congestive cardiac failure one week before they were taken gravely ill.

The app is one of a wealth of gadgets and systems under review by the health service with the aim of revolutionising personalised healthcare.



# Ongoing: translate laboratory to society



- 1.000.000 signals per proteomics analysis



- Point-of-care analysis of few biomarkers

## Manchester

### Manchester shoppers offered scans to spot lung cancer

🕒 13 June 2016 | Manchester



Shoppers at Harpurhey Market will benefit from the mobile scanning unit for a month before it moves to Wythenshawe Forum and Gorton Tesco

**Shoppers are being offered scans in north Manchester in a bid to spot lung disease in smokers.**



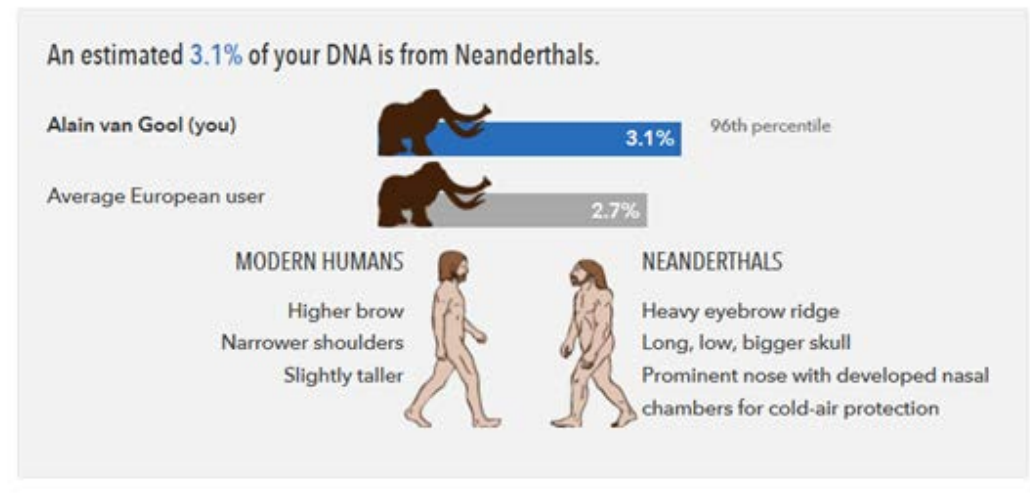
and many many many more ...

# What does my DNA tell me?



Your Results	
Who	Genetic Result
	Has 5 or more variants associated with blond hair in people with European ancestry. Approximately 53% of 23andMe customers with this result report having blond hair.
Alain van Gool	Has 3-4 variants associated with blond hair in people with European ancestry. Approximately 28% of 23andMe customers with this result report having blond hair.
	Has 1-2 variants associated with blond hair in people with European ancestry.

## Got Neanderthal DNA?



23% chance blond hair

3.1% Neanderthaler DNA

# What does my DNA tell me?

### HEALTH OVERVIEW

- HEALTH RISKS
- DRUG RESPONSE
- INHERITED CONDITIONS
- TRAITS
- HEALTH TOOLS

### ANCESTRY OVERVIEW

- ANCESTRY COMPOSITION
- MATERNAL LINE
- PATERNAL LINE
- NEANDERTHAL ANCESTRY
- ANCESTRY TOOLS

**FIND OUT WHAT YOUR DNA SAYS ABOUT YOU.**

**only \$99**

**23andMe**



Your Results

Who	Genetic Result
	Likely to be more sensitive to warfarin based on genetics. Genetic information may only be useful when determining an initial dose of warfarin. Many other factors also influence warfarin sensitivity. If you are taking warfarin, keep taking it as directed by your doctor.
	May be more sensitive to warfarin based on genetics. Genetic information may only be useful when determining an initial dose of warfarin. Many other factors also influence warfarin sensitivity. If you are taking warfarin, keep taking it as directed by your doctor.
Alain van Gool	Likely to have typical sensitivity to warfarin based on genetics. Genetic information may only be useful when determining an initial dose of warfarin. Many other factors also influence warfarin sensitivity. If you are taking warfarin, keep taking it as directed by your doctor.

Genetic risk lung cancer  
→ don't smoke !

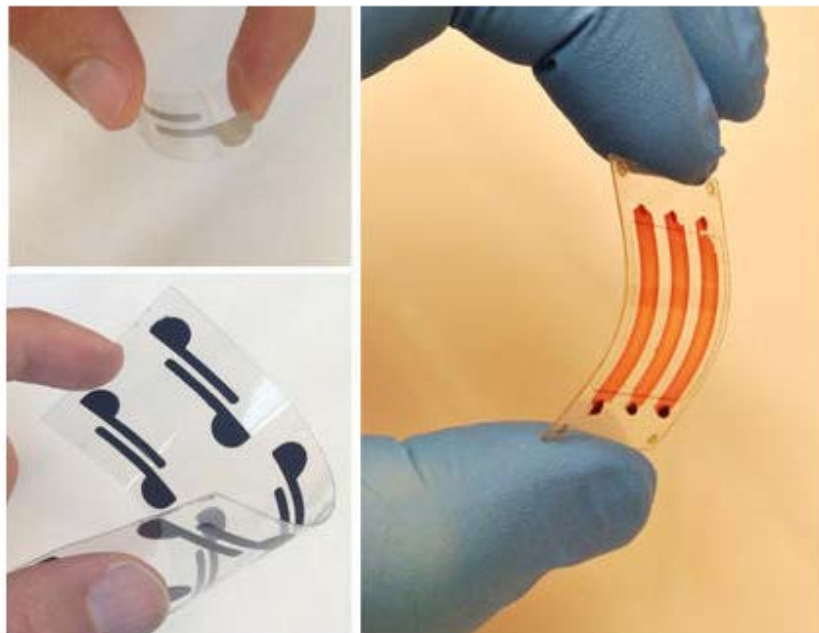
No expected adverse reaction  
to Warfarin





# Smartphone App Detects Bacteria, Diseases

Thu, 04/02/2015 - 11:58am by Florida Atlantic University



*Thin, lightweight and flexible materials developed by researchers at Florida Atlantic University, Stanford University and Harvard University, integrate cellulose paper and flexible polyester films as new diagnostic tools to detect bioagents in whole blood, serum and peritoneal fluid. Image credit: Florida Atlantic University*



... but not all data is useful data !

... but not all data is useful data !

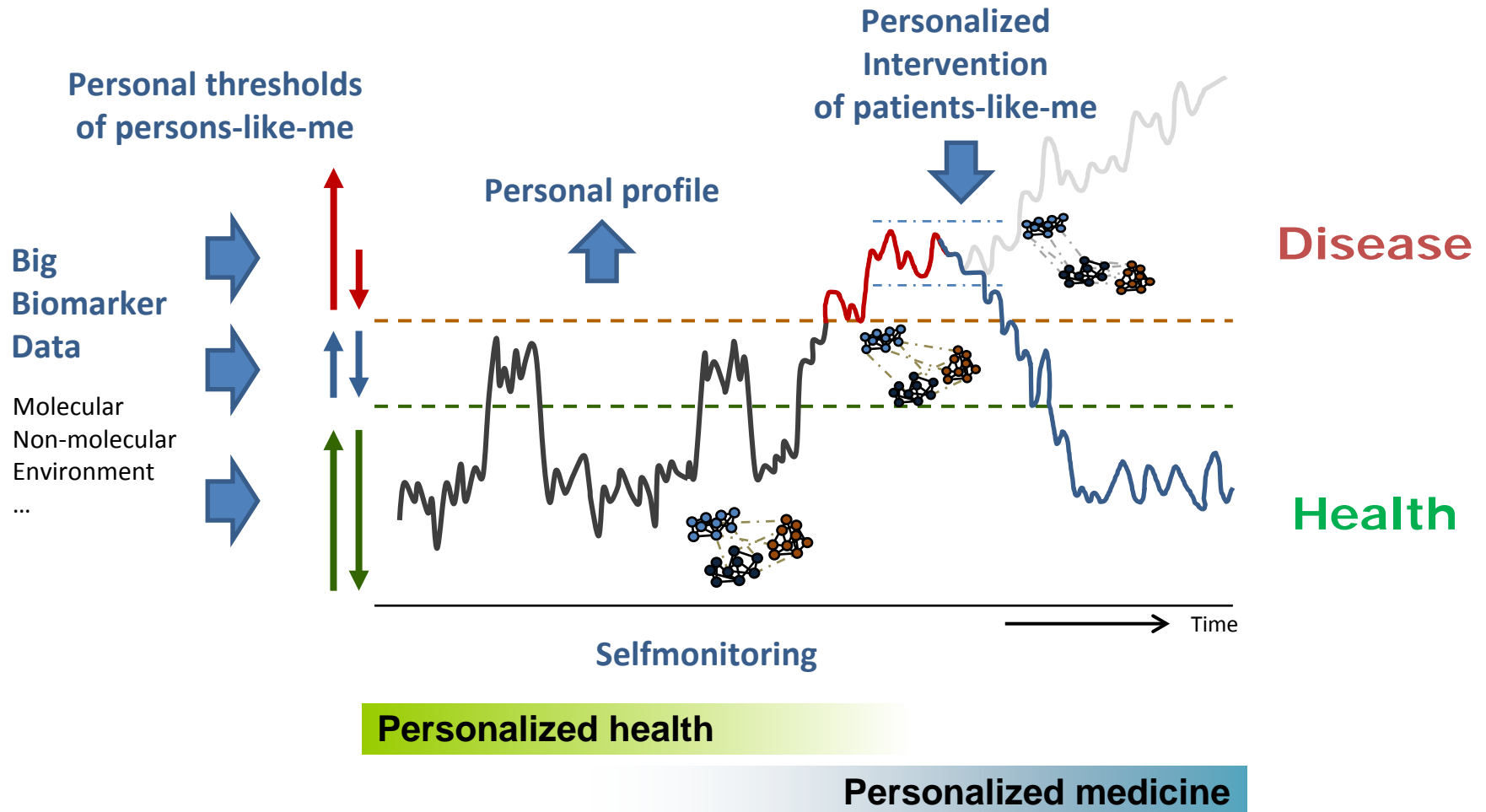
---

## 3 key aspects of personalized health(care)

'I want to stay healthy. If not, how do I get healthy?'

1. What to measure?
2. How much can it change?
3. What should be the follow-up for me?

# Personalized health(care) model



Adapted from Jan van der Greef, TNO

# Example personal profile-based patient assessment

## Personal Omics Profiling Reveals Dynamic Molecular and Medical Phenotypes

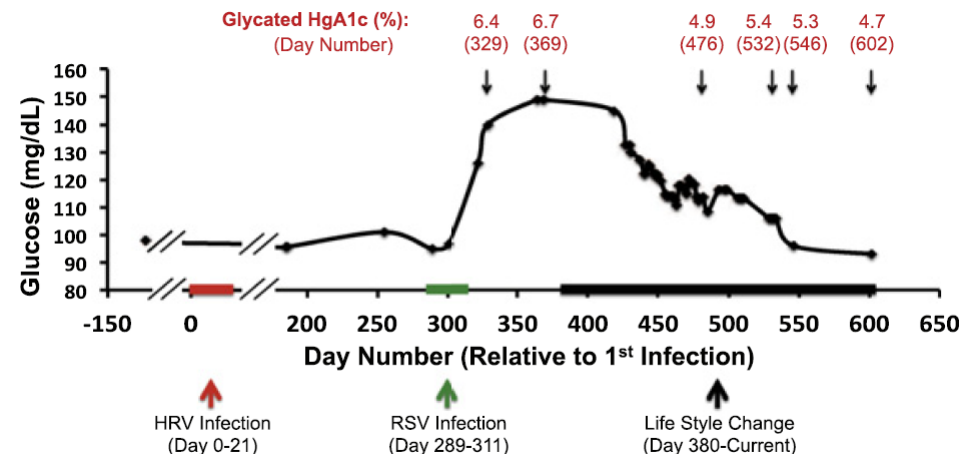
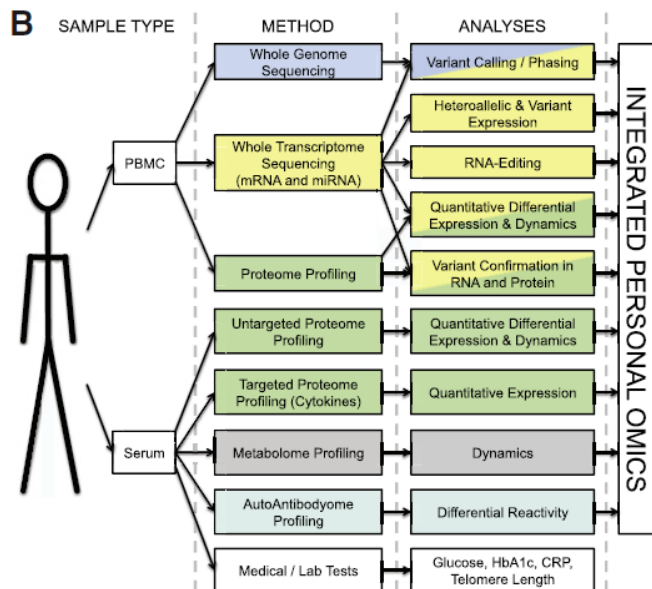
Cell

### Concept:

- Continuous monitoring (n=1)
- Routine biomarkers to alert
- Omics to explain
- Early intervention

Rui Chen,<sup>1,11</sup> George I. Mias,<sup>1,11</sup> Jennifer Li-Pook-Than,<sup>1,11</sup> Lihua Jiang,<sup>1,11</sup> Hugo Y.K. Lam,<sup>1,12</sup> Rong Chen,<sup>2,12</sup> Elana Miriami,<sup>1</sup> Konrad J. Karczewski,<sup>1</sup> Manoj Hariharan,<sup>1</sup> Frederick E. Dewey,<sup>3</sup> Yong Cheng,<sup>1</sup> Michael J. Clark,<sup>1</sup> Hogune Im,<sup>1</sup> Lukas Habegger,<sup>6,7</sup> Suganthi Balasubramanian,<sup>6,7</sup> Maeve O'Huallachain,<sup>1</sup> Joel T. Dudley,<sup>2</sup> Sara Hillenmeyer,<sup>1</sup> Rajini Haraksingh,<sup>1</sup> Donald Sharon,<sup>1</sup> Ghia Euskirchen,<sup>1</sup> Phil Lacroute,<sup>1</sup> Keith Bettinger,<sup>1</sup> Alan P. Boyle,<sup>1</sup> Maya Kasowski,<sup>1</sup> Fabian Grubert,<sup>1</sup> Scott Seki,<sup>2</sup> Marco Garcia,<sup>2</sup> Michelle Whirl-Carrillo,<sup>1</sup> Mercedes Gallardo,<sup>9,10</sup> Maria A. Blasco,<sup>9</sup> Peter L. Greenberg,<sup>4</sup> Phyllis Snyder,<sup>1</sup> Teri E. Klein,<sup>1</sup> Russ B. Altman,<sup>1,5</sup> Atul J. Butte,<sup>2</sup> Euan A. Ashley,<sup>3</sup> Mark Gerstein,<sup>6,7,8</sup> Kari C. Nadeau,<sup>2</sup> Hua Tang,<sup>1</sup> and Michael Snyder<sup>1,\*</sup>

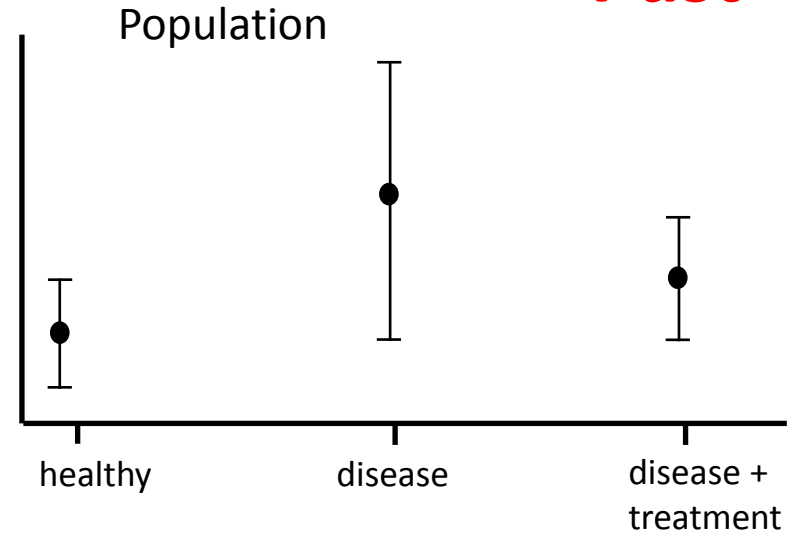
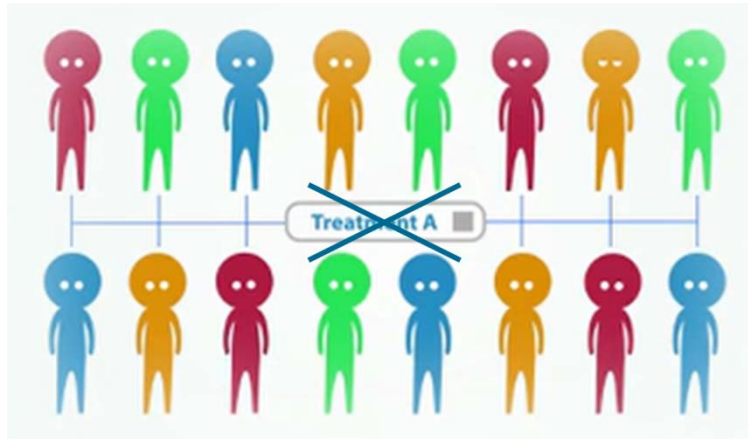
{Chen et al, Cell 2012, 148: 1293}



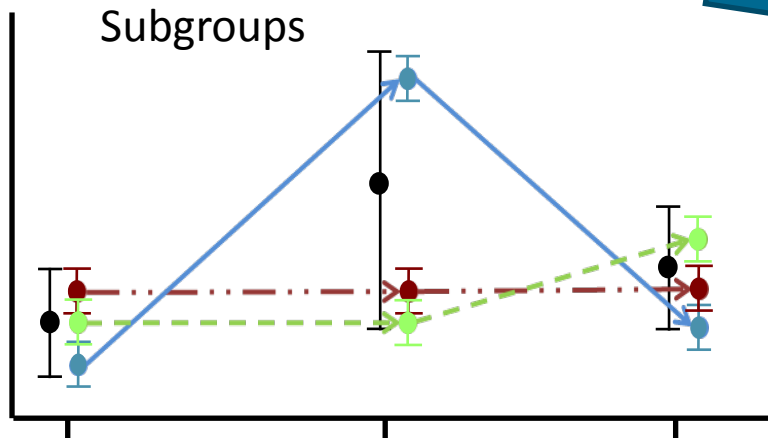


# Moving to truly personalized monitoring

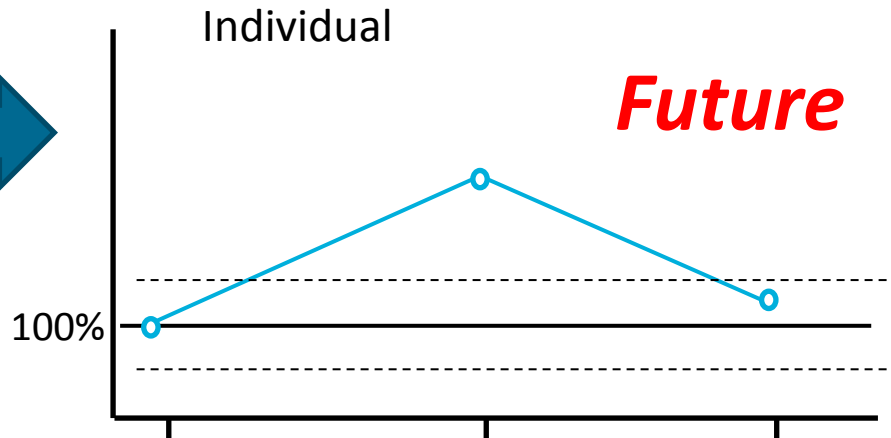
*Past*



*Present*



*Future*



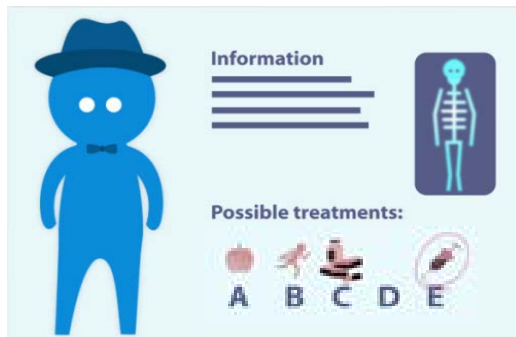


# Personalized health(care) monitoring as part of our lives

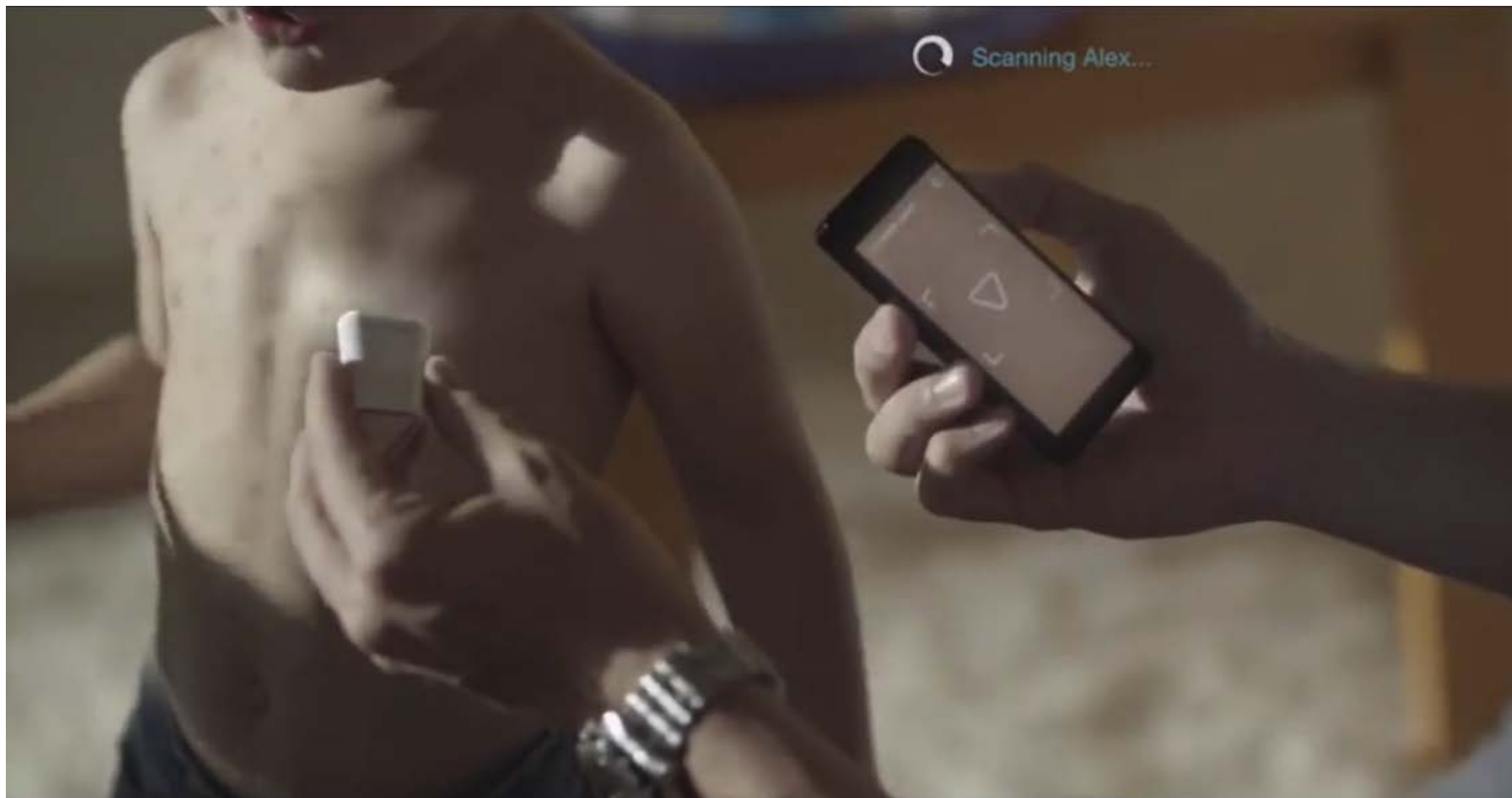
- Monitor on background
- Alert when you are at risk
- Advice what to do

Examples from car dashboard:

- Empty gas tank
- Traffic jam ahead



## View in the (very near) future



# View in the (very near) future



# Acknowledgements

## Radboudumc

Hans Wessels  
Roel Tans  
Maurice van Dael  
Dirk Lefeber

Jolein Gloerich  
Esther Willems  
Jenneke Keizer  
Monique van  
Scherpenzeel

Leo Kluijtmans  
Marcel Verbeek  
Jan Kremer  
Nathalie Bovy  
the Radboudumc Technology Centers  
and many others



Ruben Kok  
Jaap Heringa  
many others

Barend Mons  
Merlijn van Rijswijk and

[alain.vangool@tno.nl](mailto:alain.vangool@tno.nl)

[alain.vangool@radboudumc.nl](mailto:alain.vangool@radboudumc.nl)

[www.linkedin.com](https://www.linkedin.com)

[www.slideshare.net/alainvangool](https://www.slideshare.net/alainvangool)



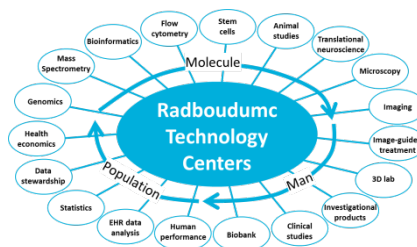
Jan van der Greef  
Ivana Bobeldijk  
Lars Verschuren  
Suzan Wopereis  
Wessel Kraaij  
Peter van Dijken  
and many others

Ben van Ommen  
Hans Princen  
Marjan van Erk  
Heleen Wortelboer  
Ronald Mooi  
Cyrille Krul

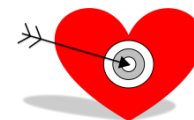


Anton Ussi  
Laura Bermejo  
Sulev Koks  
Giovanni Migliaccio  
and many others

Florence Bietrix  
Andreas Scherer  
Marian Hajdich



Many collaborators and funders



CarTarDis



Biomarker  
Development  
Center



university of  
 groningen



Waters  
THE SCIENCE OF WHAT'S POSSIBLE™

Singulex



Radboud Universiteit Nijmegen



lygature  
pioneering medicine.  
together.



BBMRI-ERIC  
Biobanking and  
BioMolecular Resources  
Research Infrastructure



HealthValley  
Netherlands

provincie  
Gelderland



STW  
Perspectief  
Nieuwe technologie mogelijk maken  
in de topsectoren

[www.radboudumc.nl/personalizedhealthcare](http://www.radboudumc.nl/personalizedhealthcare)

[www.radboudumc.nl/research/technologycenters](http://www.radboudumc.nl/research/technologycenters)

[www.radboudresearchfacilities.nl](http://www.radboudresearchfacilities.nl)